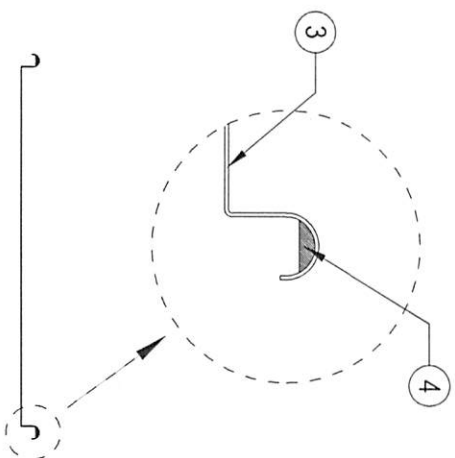
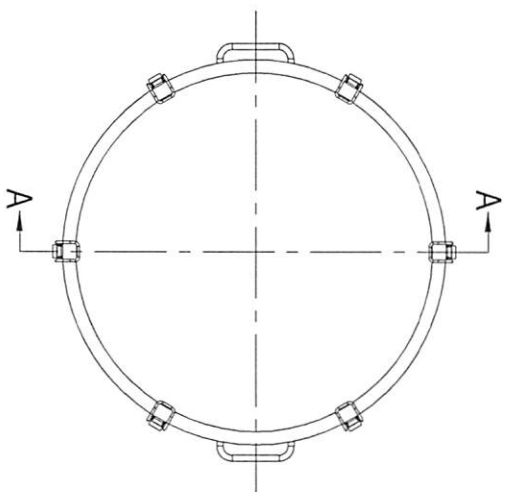
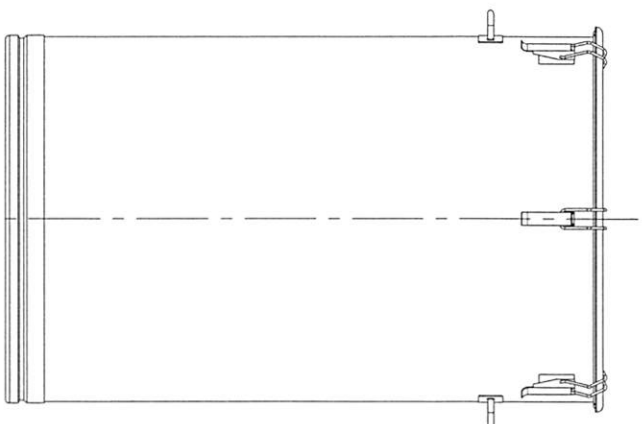


TOP VIEW

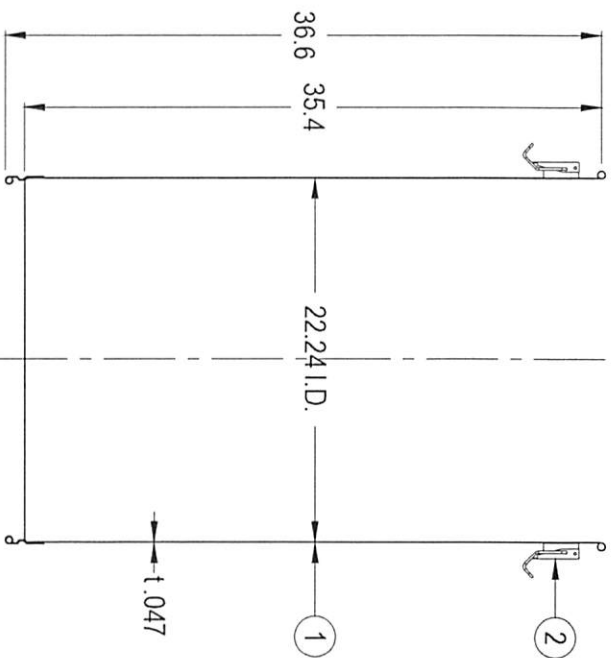


#	Qty.	Description
1	1	CTH-565H CONTAINER (T-316L-SS)
2	6	SPRING CLIPS (T-304-SS)
3	1	CTH-565H LID (T-316L-SS)
4	1	CTH-565H GASKET
5	2	SOLID-BAR HANDLES (T-304-SS)
6	1	SKIRT (T-304-SS)

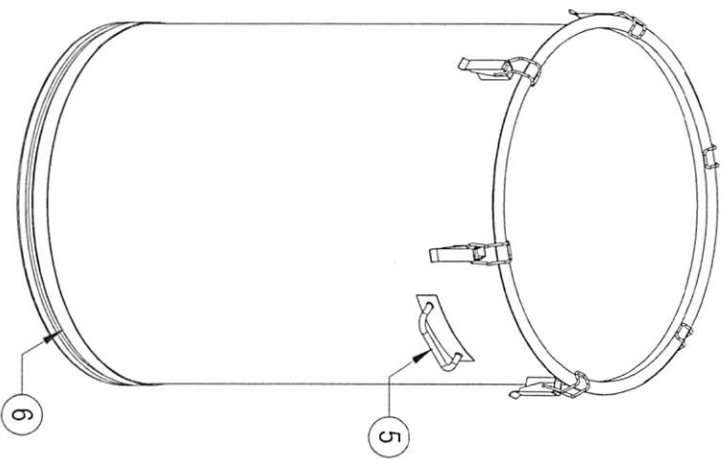
CONFIDENTIAL
Property of
Eagle Stainless Container



FRONT VIEW



A-A SECTION VIEW



PROPERTY OF ESC. DO NOT DUPLICATE OR DISTRIBUTE.

EAGLE
STAINLESS
www.eaglestainless.com

816 NINA WAY
WARMINSTER PA 18974
TEL#: 215-957-9333
FAX#: 215-957-9330

DRAWING#: CTH565H-A-1-01A
MATERIAL: See Table on Drawing for Detail
CAPACITY: 200.0 L (ACTUAL CAPACITY: 223.7 L)
FINISH: 10 Ra (ELECTROPOLISHED OPTIONAL)
MODEL #: CTH-565H

DRAWN BY: BEN S. KYON
(1) APPROVED BY: [Signature]
NOTE: ALL DIMENSIONS ARE INCHES.
DO NOT SCALE.

DATE: 12/22/2016
(2) APPROVED BY: [Signature]

TOLERANCES UNLESS OTHERWISE SPECIFIED	THREE PLACE DECIMAL	ONE PLACE DECIMAL	FRACTIONS	ANGULARITY	RADIUS
	+/- .010"	+/- .125"	+/- .250"	+/- .1/2 deg	+/- .1/32" - .031"