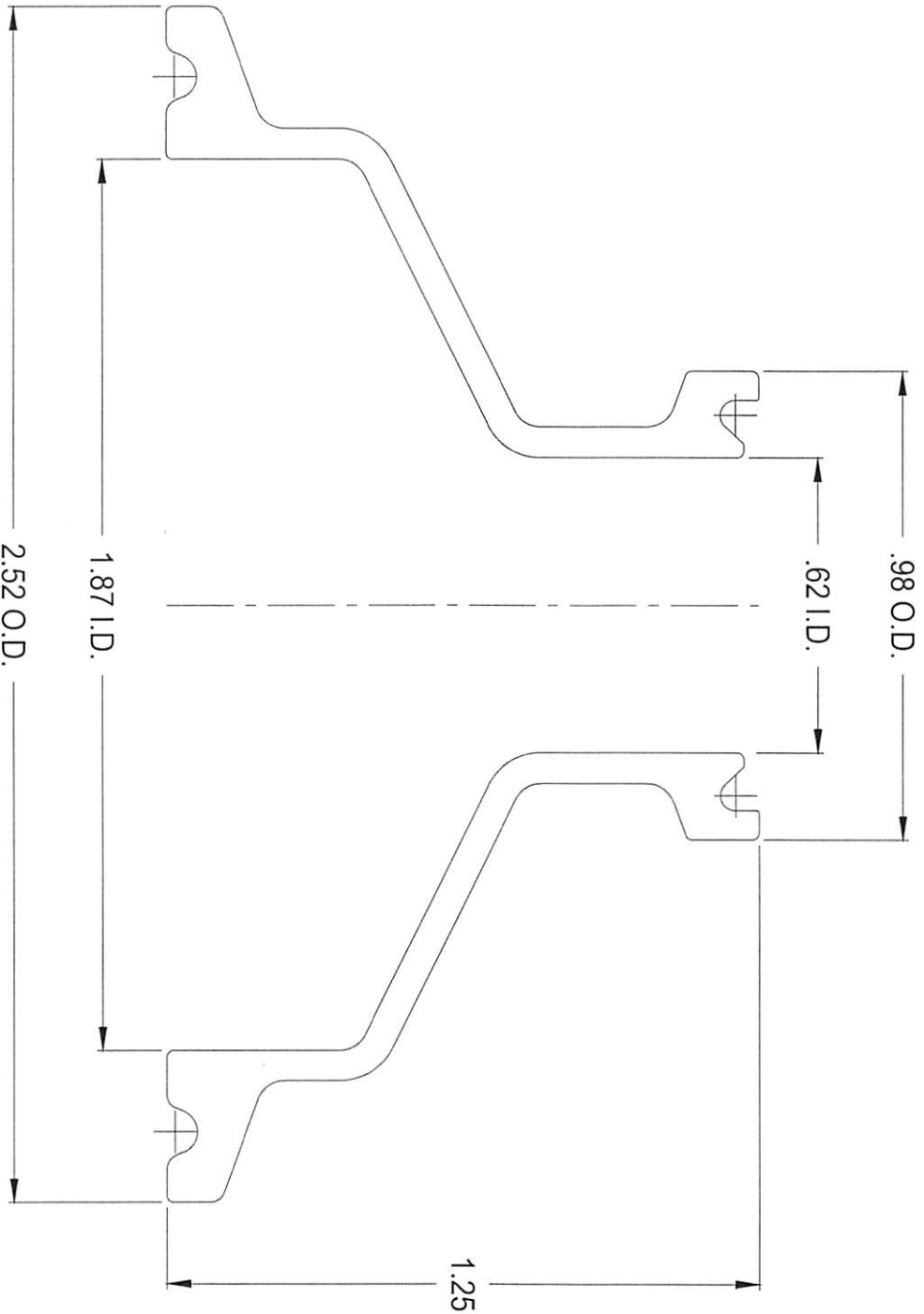


2" TC X 3/4" TC REDUCER

CONFIDENTIAL
Property of
Eagle Stainless Container



PROPERTY OF ESC. DO NOT DUPLICATE OR DISTRIBUTE.

EAGLE
816 NINA WAY
WARMINSTER PA 18974
TEL#: 215-957-9333
FAX#: 215-957-9330
www.eaglestainless.com

Customer and/or Vendor agrees to keep confidential the contents of any documents and materials including but not limited to Quotation(s), Invoice(s), Purchase Order(s), and Drawing(s) that Eagle Stainless provides to Customer and/or Vendor and acknowledges that they are trade secrets of Eagle Stainless. Customer and/or Vendor agrees to indemnify Eagle Stainless for all damages (including an attorney's fees and costs incurred) in connection with any and/or unauthorized disclosure of such confidential information by any of Customer and/or Vendor's employees or agents.

DRAWING#: RD2075A-1-02A
MATERIAL: 1-316L-SS
CAPACITY: N/A
FINISH: ELECTROPOLISHED
MODEL #: 2" X 3/4" TC REDUCER

DRAWN BY: BEN S. KWON
APPROVED BY: [Signature]

DATE: 01/24/2019
APPROVED BY: [Signature]

TOLERANCES UNLESS OTHERWISE SPECIFIED	
THREE PLACE DECIMAL	+/- .010"
TWO PLACE DECIMAL	+/- .125"
ONE PLACE DECIMAL	+/- .250"
FRACTIONS	+/- 1/32"
ANGULARITY	+/- 1/2 deg.
RADIUS	+/- .132" - .031"