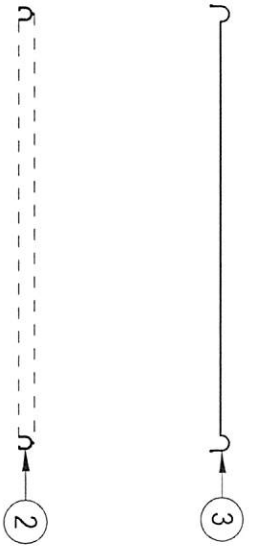
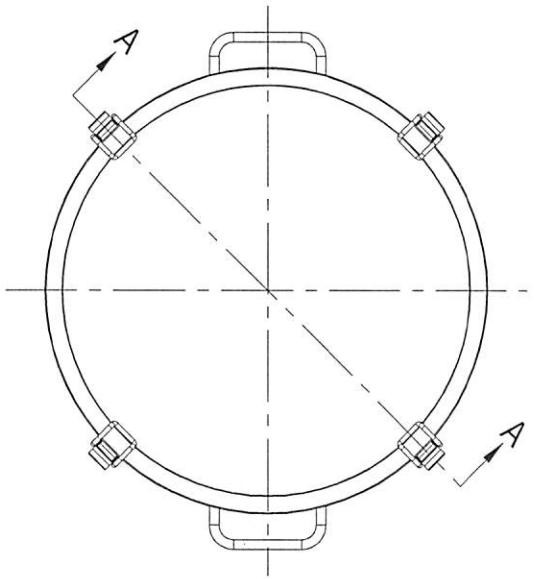
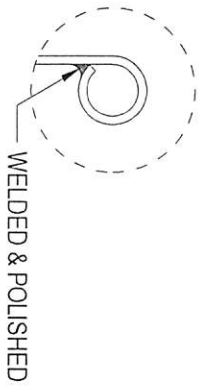


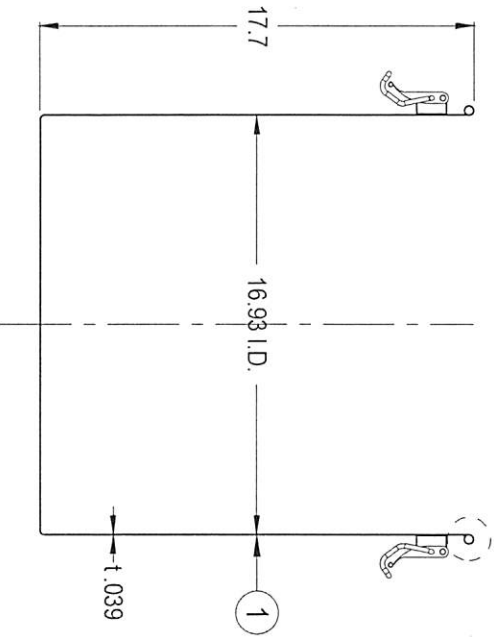
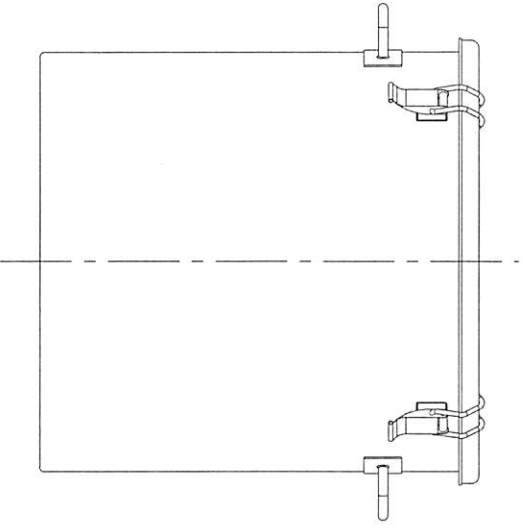
TOP VIEW



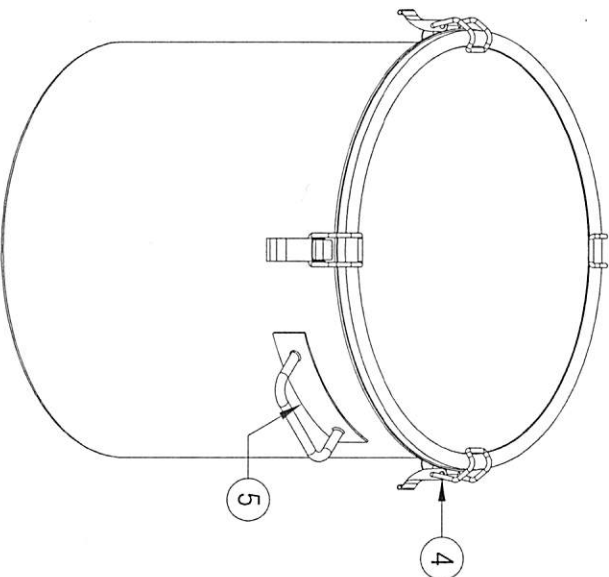
#	Qty.	Description
1	1	CTH5MA-43 CONTAINER (T-316L-SS)
2	1	CTH-43 GASKET
3	1	CTH-43 LID (T-316L-SS)
4	4	SPRING CLIPS (T-304-SS)
5	2	SOLID-BAR HANDLES (T-304-SS)



FRONT VIEW



A-A SECTION VIEW



CONFIDENTIAL
Property of
Eagle Stainless Container

PROPERTY OF ESC. DO NOT DUPLICATE OR DISTRIBUTE

EAGLE 816 NINA WAY
WARMINSTER PA 18974
TEL#: 215-957-9333
FAX#: 215-957-9330
www.eaglestainless.com

Customer and/or Vendor agrees to keep confidential the contents of any documents and materials including but not limited to: Drawings, Models, Purchase Orders, and Drawings that Eagle Stainless has provided to the Customer and/or Vendor. Eagle Stainless shall not be held liable for any damages, including all attorneys' fees and costs incurred in connection with any unauthorized use or disclosure of such confidential information by any of Customer and/or Vendor's employees or agents.

DRAWING#	CTH5MA-43A-1-01A	DRAWN BY	BEN S. KIMON	DATE	10/16/2017	TOLERANCES UNLESS OTHERWISE SPECIFIED
MATERIAL	See Table on Drawing for Detail	(1) APPROVED BY:	<i>[Signature]</i>	(2) APPROVED BY:	<i>[Signature]</i>	THREE PLACE DECIMAL
CAPACITY	80.0 L (ACTUAL CAPACITY: 65.0 L)	NOTE	ALL DIMENSIONS ARE INCHES	DO NOT SCALE		TWO PLACE DECIMAL
FINISH	10 Ra (ELECTROPOLISHED OPTIONAL)					ONE PLACE DECIMAL
MODEL #	CTH5MA-43	APPROVED BY (CUSTOMER SIGNATURE):				FRACTIONS
						ANGULARITY
						RADIUS