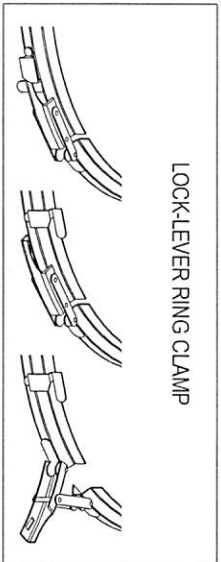
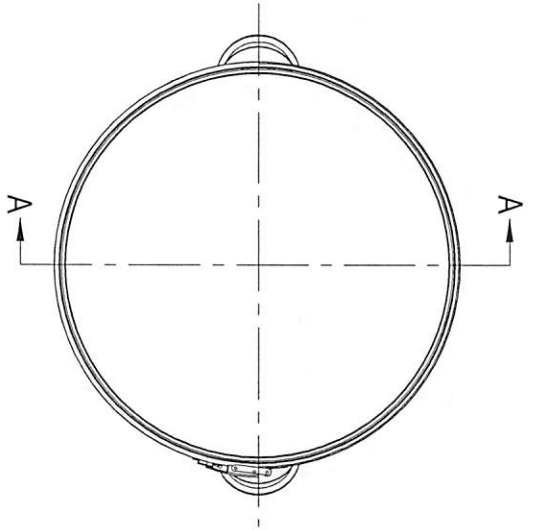


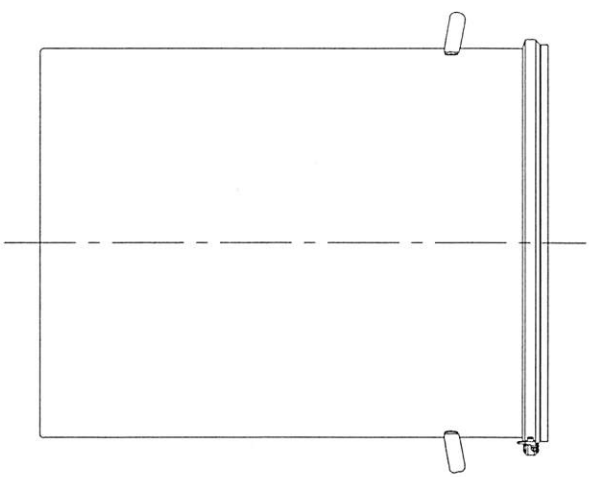
TOP VIEW



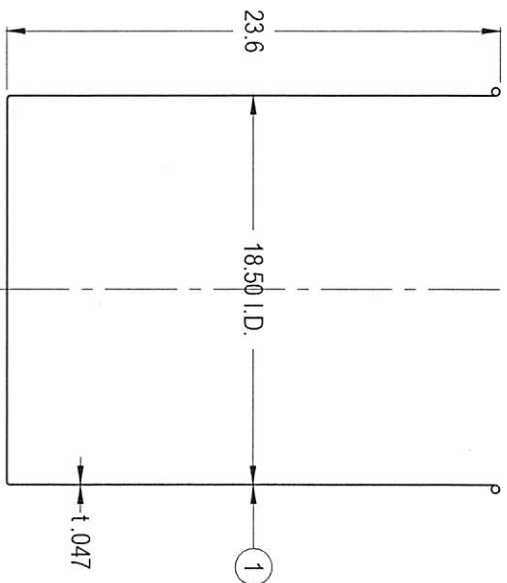
LOCK-LEVER RING CLAMP

#	Qty.	Description
1	1	CTL-47H CONTAINER (T-316L-SS)
2	1	CTL-47H GASKET
3	1	CTL-47H LID (T-316L-SS)
4	1	LOCK-LEVER RING CLAMP (T-304-SS)
5	2	HOLLOW HANDLES (T-304-SS)

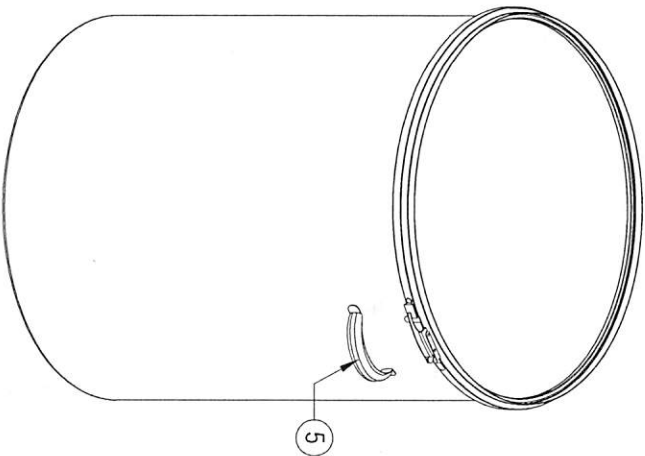
**CONFIDENTIAL**  
Property of  
Eagle Stainless Container



FRONT VIEW



AA SECTION VIEW



**EAGLE**  
STAINLESS  
www.eaglestainless.com

816 NINA WAY  
WARMINSTER PA 18974  
TEL#: 215-957-9333  
FAX#: 215-957-9330

DRAWING#: CTL47HA-101A  
MATERIAL: See Table on Drawing for Detail  
CAPACITY: 100.0 L (ACTUAL CAPACITY: 103.0 L)  
FINISH: #0 Ra (ELECTROPOLISHED OPTIONAL)  
MODEL #: CTL-47H

DRAWN BY: BEN S. KIVON  
DATE: 08/02/2017  
APPROVED BY: [Signature]  
NOTE: ALL DIMENSIONS ARE INCHES.  
DO NOT SCALE.  
APPROVED BY (CUSTOMER SIGNATURE):

TOLERANCES UNLESS OTHERWISE SPECIFIED	
THREE PLACE DECIMAL	+/- .010"
ONE PLACE DECIMAL	+/- .125"
FRACTIONS	+/- .250"
ANGULARITY	+/- .132°
RADIUS	+/- .132" - .031"

PROPERTY OF ESC. DO NOT DUPLICATE OR DISTRIBUTE