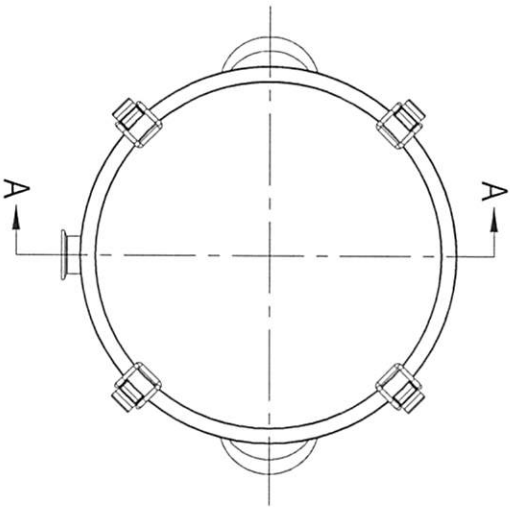


TOP VIEW



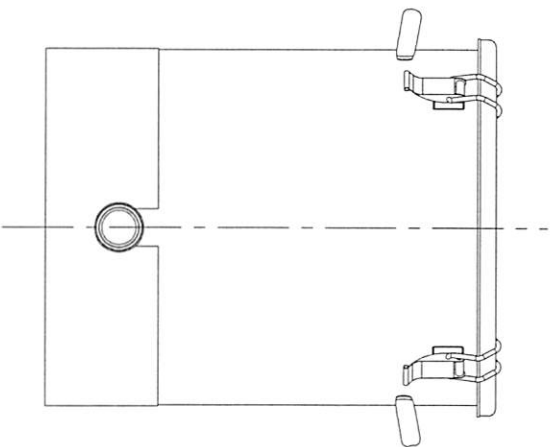
**CONFIDENTIAL**  
Property of  
Eagle Stainless Container



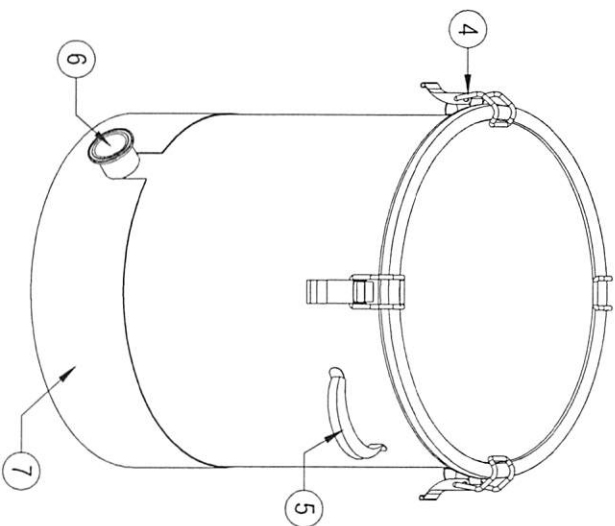
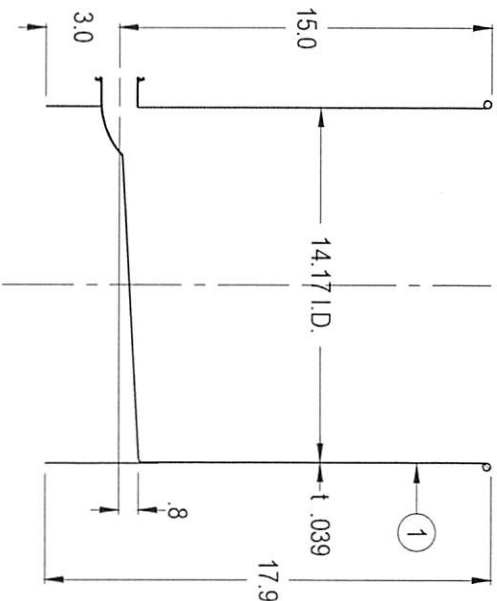
#	Qty.	Description
1	1	KTTCTH-36 CONTAINER (T-316L-SS)
2	1	CTH-36 GASKET
3	1	CTH-36 LID (T-316L-SS)
4	4	SPRING CLIPS (T-304-SS)
5	2	HOLLOW HANDLES (T-304-SS)
6	1	1-1/2" TC FERRULE (T-316L-SS)
7	1	SKIRT (T-304-SS)

\*\* TC = TRI-CLAMP

FRONT VIEW



A-A SECTION VIEW



PROPERTY OF ESC. DO NOT DUPLICATE OR DISTRIBUTE.

**EAGLE**  
STAINLESS  
www.eaglestainless.com

816 NINA WAY  
WARMINSTER, PA 18914  
TEL#: 215-957-4933  
FAX#: 215-957-4930

Customer and/or Vendor agrees to keep confidential the contents of any documents and materials including but not limited to Quotations, Invoices, Purchase Orders, and Drawings that Eagle Stainless provides to Customer and/or Vendor and acknowledges that they are to remain the property of Eagle Stainless. Customer and/or Vendor agrees to indemnify Eagle Stainless for all damages (including all attorneys' fees and costs) incurred in connection with any unauthorized use or disclosure of such confidential information by any of Customer and/or Vendor's employees or agents.

DRAWING#: KTTCTH36A-1-01A  
MATERIAL: See Table on Drawing for Detail  
CAPACITY: 35.0L (ACTUAL CAPACITY: 37.0L)  
FINISH: 10 Ra (ELECTROPOLISHED OPTIONAL)  
MODEL #: KTTCTH-36

DRAWN BY: BEN S. KWON  
(1) APPROVED BY: [Signature]  
NOTE: ALL DIMENSIONS ARE INCHES.  
DO NOT SCALE  
APPROVED BY (CUSTOMER SIGNATURE):

DATE: 07/27/2017  
(2) APPROVED BY: [Signature]

TOLERANCES UNLESS OTHERWISE SPECIFIED	
THREE PLACE DECIMAL	+/- .010"
TWO PLACE DECIMAL	+/- .125"
ONE PLACE DECIMAL	+/- .250"
FRACTIONS	+/- 1/32"
ANGULARITY	+/- 1/2 deg