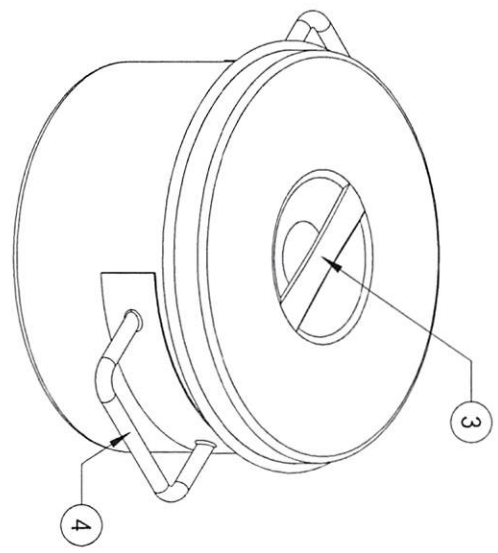
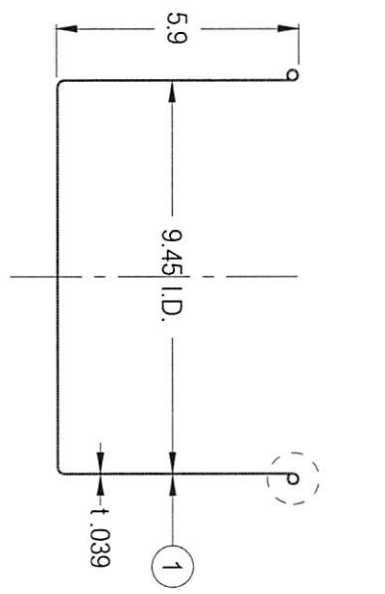
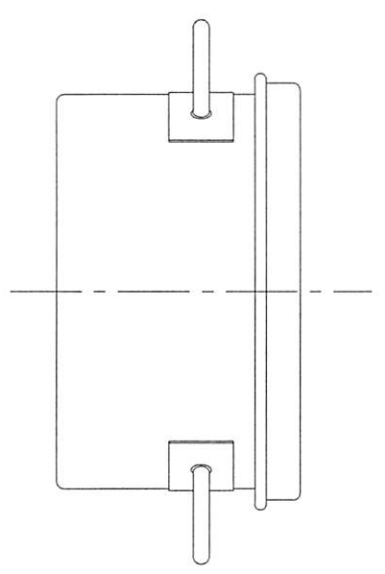
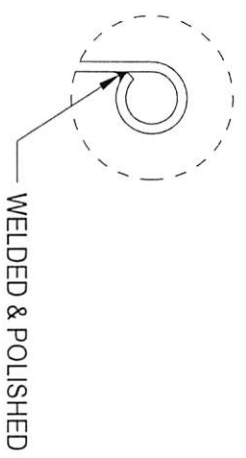
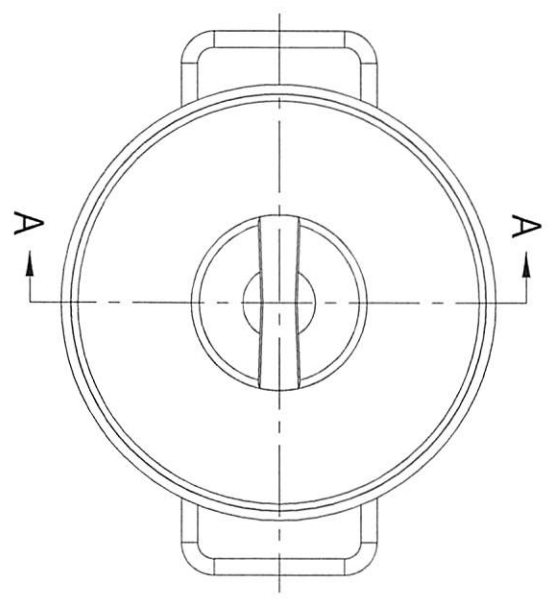


TOP VIEW



FRONT VIEW

A-A SECTION VIEW

#	Qty.	Description
1	1	ST SMA-24S CONTAINER (T-316L-SS)
2	1	ST-24 LOOSE LID (T-316L-SS)
3	1	EASY-LIFTING LID HANDLE (T-304-SS)
4	2	SOLID-BAR HANDLES (T-304-SS)

CONFIDENTIAL
Property of
Eagle Stainless Container

PROPERTY OF ESC. DO NOT DUPLICATE OR DISTRIBUTE

EAGLE 816 NINA WAY
WARMINGSTER PA 18974
TEL #: 215-957-9333
STAINLESS FAX#: 215-957-9330
www.eaglestainless.com

Customer and/or Vendor agrees to keep confidential the contents of any documents and materials including but not limited to Quotations, Proposals, Purchase Orders, and Drawings that Eagle Stainless provides to the Customer. Eagle Stainless reserves the right to modify the terms and conditions of Eagle Stainless. Customer and/or Vendor agrees to indemnify Eagle Stainless for all damages, including all attorney's fees and costs incurred in connection with any unauthorized use or disclosure of such confidential information by any of Customer and/or Vendor's employees or agents.

DRAWINGS# : STSMA24SA-1-01A
MATERIAL : See Table on Drawing for Detail
CAPACITY : 6.0L (ACTUAL CAPACITY : 6.5L)
FINISH : 10 Ra (ELECTROPOLISHED OPTIONAL)
MODEL # : STSMA-24S

DRAWN BY : BEN S. KWON
DATE : 01/17/2018
(1) APPROVED BY : [Signature]
NOTE : ALL DIMENSIONS ARE INCHES
DO NOT SCALE
APPROVED BY (CUSTOMER SIGNATURE) :

TOLERANCES UNLESS OTHERWISE SPECIFIED	
THREE PLACE DECIMAL	+/- .010"
TWO PLACE DECIMAL	+/- .125"
ONE PLACE DECIMAL	+/- .250"
FRACTIONS	+/- .132"
ANGULARITY	+/- .12 DEG.
RADIUS	+/- .112" - .031"