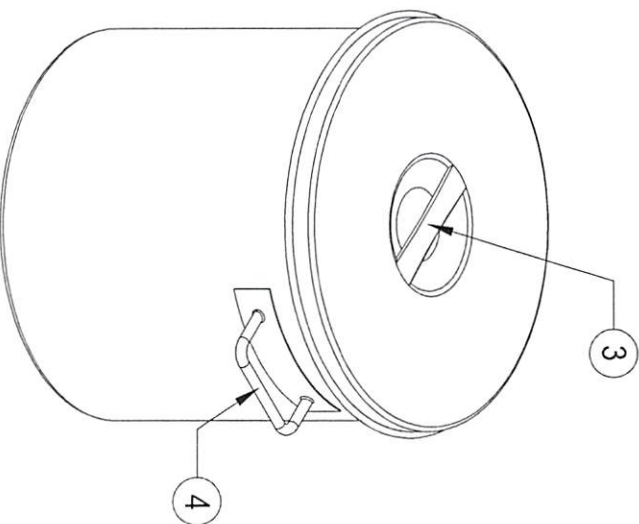
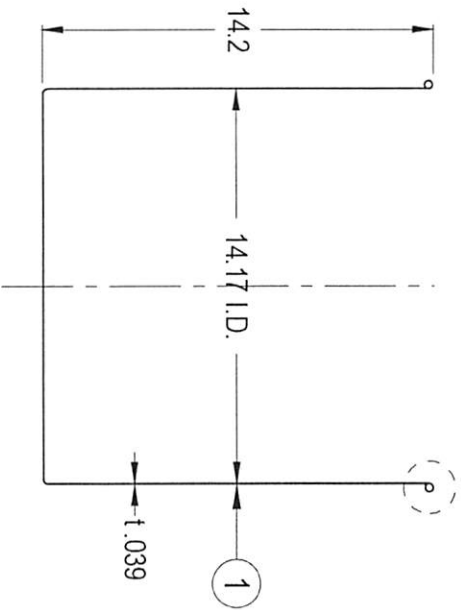
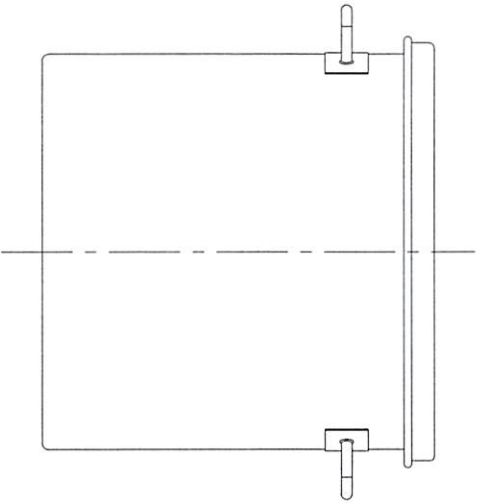
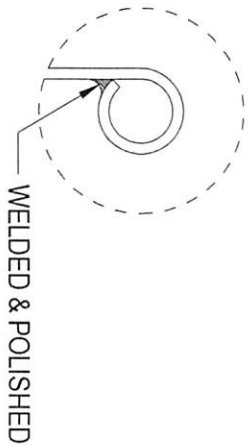
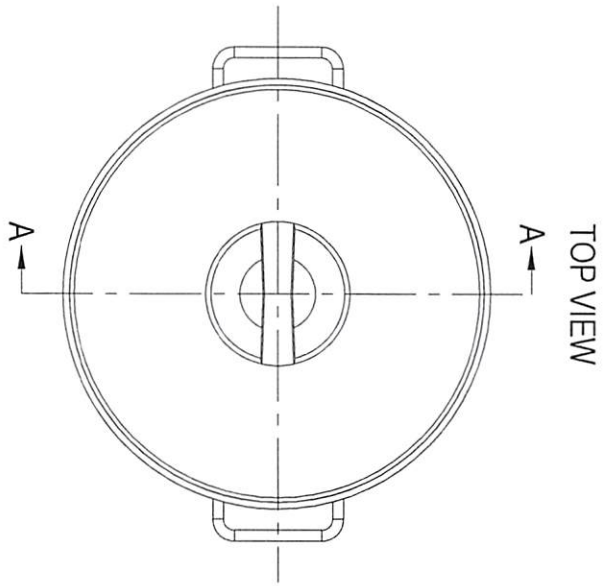


CONFIDENTIAL
Property of
Eagle Stainless Container

| # | Qty. | Description |
|---|------|------------------------------------|
| 1 | 1 | STMA-36 CONTAINER (T-316L-SS) |
| 2 | 1 | STMA-36 LID (T-316L-SS) |
| 3 | 1 | EASY-LIFTING LID HANDLE (T-304-SS) |
| 4 | 2 | SOLID-BAR HANDLES (T-304-SS) |



FRONT VIEW

A-A SECTION VIEW

PROPERTY OF ESC. DO NOT DUPLICATE OR DISTRIBUTE.

EAGLE 816 NINA WAY
WARMINSTER PA 18974
TEL#: 215-957-9333
FAX#: 215-957-9330
www.eaglestainless.com

Customer and/or Vendor agrees to keep confidential the contents of any documents and materials including but not limited to quotation(s), invoice(s), Purchase Order(s), and Drawing(s) that Eagle Stainless provides to the customer. Eagle Stainless Customer and/or Vendor agree to indemnify Eagle Stainless for all damages, including all attorney's fees and costs incurred in connection with any unauthorized use or disclosure of such confidential information by any of Customer and/or Vendor's employees or agents.

| | | | |
|--|--------------------------------------|--------------------------------------|---------------------------------------|
| DRAWING# : STMA36-1.01A | DRAWN BY : BEN S. AMON | DATE : 04/05/2016 | TOLERANCES UNLESS OTHERWISE SPECIFIED |
| MATERIAL : See Table on Drawing for Detail | (1) APPROVED BY : <i>[Signature]</i> | (2) APPROVED BY : <i>[Signature]</i> | THREE PLACE DECIMAL |
| CAPACITY : 36.0 L (ACTUAL CAPACITY : 37.1 L) | NOTE : ALL DIMENSIONS ARE INCHES | DO NOT SCALE | TWO PLACE DECIMAL |
| FINISH : 10 Ra (ELECTROPOLISHED OPTIONAL) | APPROVED BY (CUSTOMER SIGNATURE) : | | ONE PLACE DECIMAL |
| MODEL # : STMA-36 | | | FRACTIONS |
| | | | ANGULARITY |