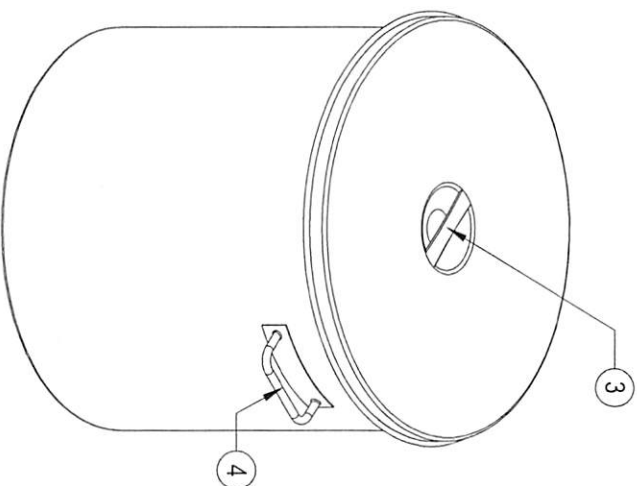
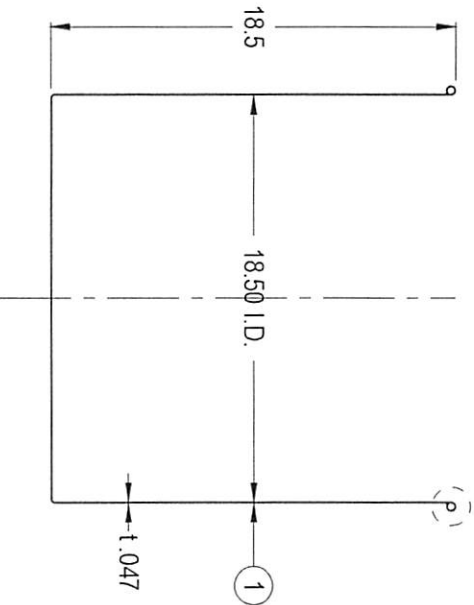
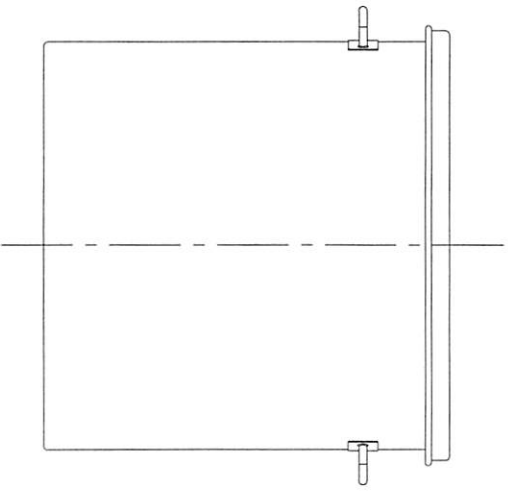
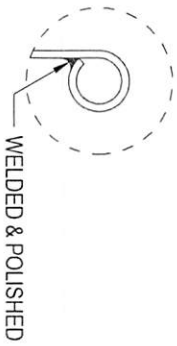
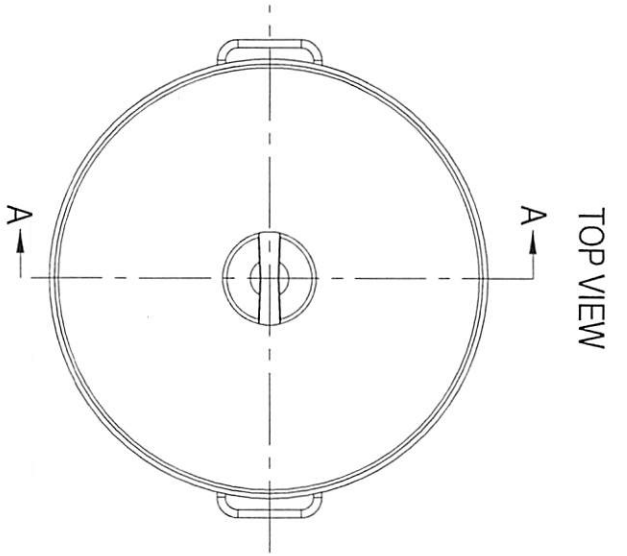


CONFIDENTIAL
Property of
Eagle Stainless Container

#	Qty.	Description
1	1	STSMA-47 CONTAINER (T-316L-SS)
2	1	ST-47 LID (T-316L-SS)
3	1	EASY-LIFTING LID HANDLE (T-304SS)
4	2	SOLID-BAR HANDLES (T-304SS)



FRONT VIEW

A-A SECTION VIEW

PROPERTY OF ESC. DO NOT DUPLICATE OR DISTRIBUTE.

EAGLE STAINLESS
WAY WARMINSTER PA 18974
TEL #: 215-957-9333
FAX #: 215-957-9330
www.eaglestainless.com

Customer and/or Vendor agrees to keep confidential the contents of any documents and materials including but not limited to Quotation(s) Invoice(s) Purchase Order(s) and Drawing(s) that Eagle Stainless provides to Customer and/or Vendor and acknowledges that they are trade secrets of Eagle Stainless. Customer and/or Vendor agrees to indemnify Eagle Stainless for all damages (including all attorneys' fees and costs incurred) in connection with any unauthorized use or disclosure of such confidential information by any of Customer and/or Vendor's employees or agents.

DRAWING#: STSMA47A-1-01A
MATERIAL: See Table on Drawing for Detail
CAPACITY: 75.0L (ACTUAL CAPACITY: 81.0L)
FINISH: 10 Ra (ELECTROPOISHED OPTIONAL)
MODEL #: STSMA-47

DRAWN BY: BEN S. KWON
DATE: 01/29/2018
TOLERANCES UNLESS OTHERWISE SPECIFIED
THREE PLACE DECIMAL
TWO PLACE DECIMAL
ONE PLACE DECIMAL
FRACTIONS
ANGULARITY
RADIUS

(1) APPROVED BY: *[Signature]*
(2) APPROVED BY: *[Signature]*
NOTE: ALL DIMENSIONS ARE INCHES
DO NOT SCALE
APPROVED BY (CUSTOMER SIGNATURE):

+/- .010"
+/- .125"
+/- .250"
+/- .132"
+/- .112 deg
+/- .132" - .031"