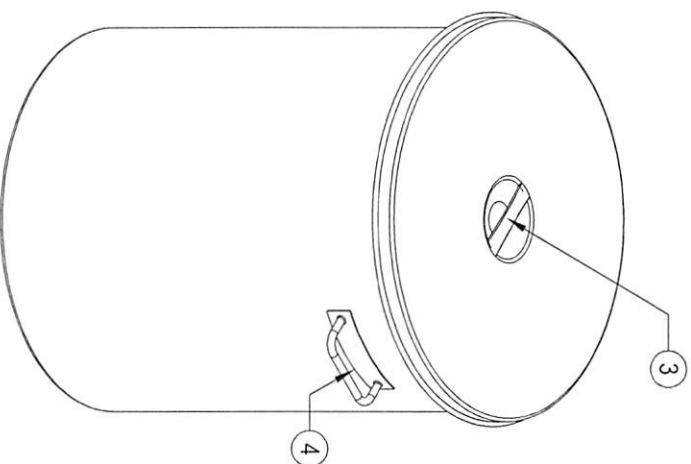
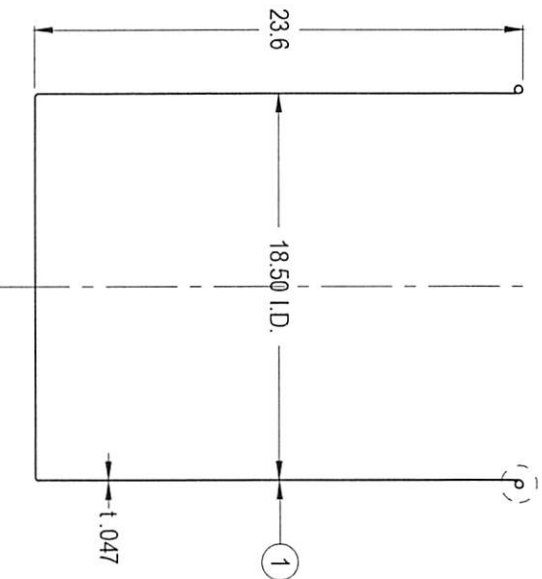
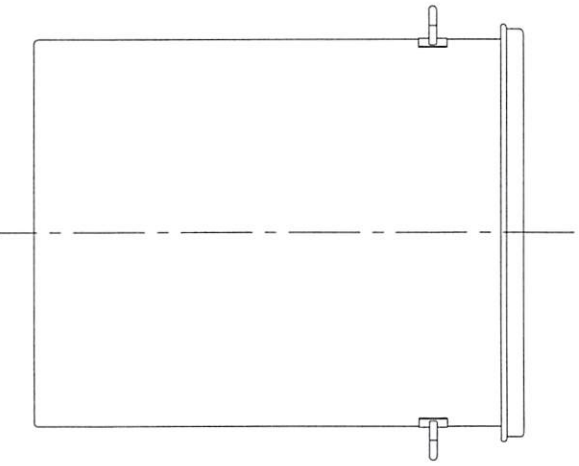
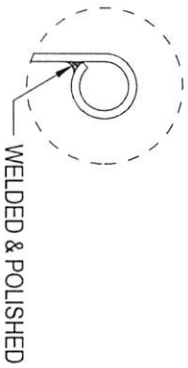
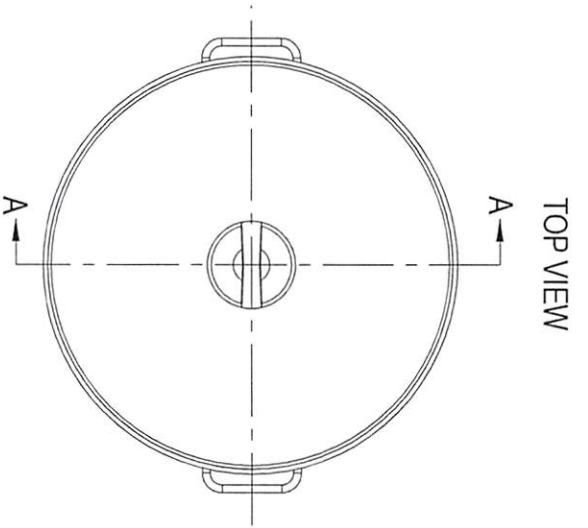


CONFIDENTIAL
Property of
Eagle Stainless Container

#	Qty.	Description
1	1	ST-47H CONTAINER (T-316L-SS)
2	1	ST-47H LOOSE LID (T-316L-SS)
3	1	EASY-LIFTING HANDLE (T-304-SS)
4	2	SOLID-BAR HANDLES (T-304-SS)



FRONT VIEW

A-A SECTION VIEW

PROPERTY OF ESC. DO NOT DUPLICATE OR DISTRIBUTE.

EAGLE STAINLESS
www.eaglestainless.com

816 NINA WAY
WARMINSTER PA 18974
TEL#: 215-957-9333
FAX#: 215-957-9330

DRAWING#: STSMA47H-1-01A
MATERIAL: See Table on Drawing for Detail
CAPACITY: 100.0 L (ACTUAL CAPACITY: 103.0 L)
FINISH: 10 Ra (ELECTROPOLISHED OPTIONAL)
MODEL #: STSMA-47H

DRAWN BY: BEN S. MYONI
(1) APPROVED BY: *[Signature]*
NOTE: ALL DIMENSIONS ARE INCHES.
DO NOT SCALE
APPROVED BY (CUSTOMER SIGNATURE):

DATE: 12/05/2017
(2) APPROVED BY: *[Signature]*

TOLERANCES UNLESS OTHERWISE SPECIFIED	THREE PLACE DECIMAL	TWO PLACE DECIMAL	ONE PLACE DECIMAL	FRACTIONS	ANGULARITY	RADIUS
	+/- .010"	+/- .125"	+/- .250"	+/- .132"	+/- .1/2 deg	+/- .132"-.031"