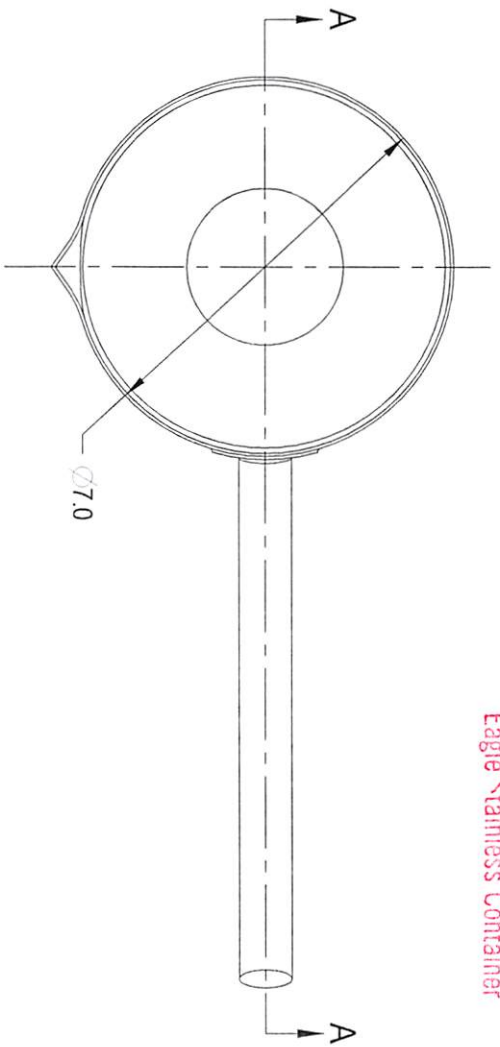
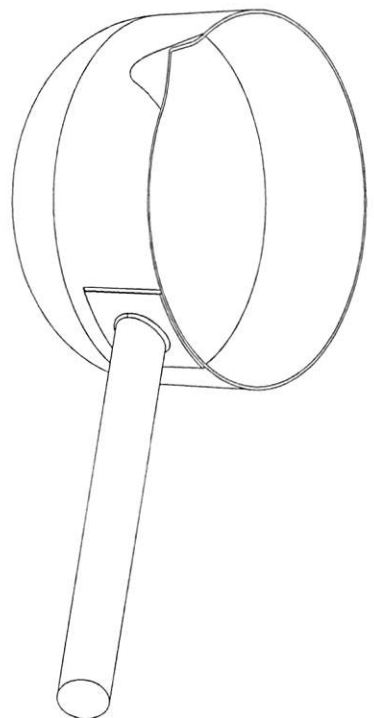


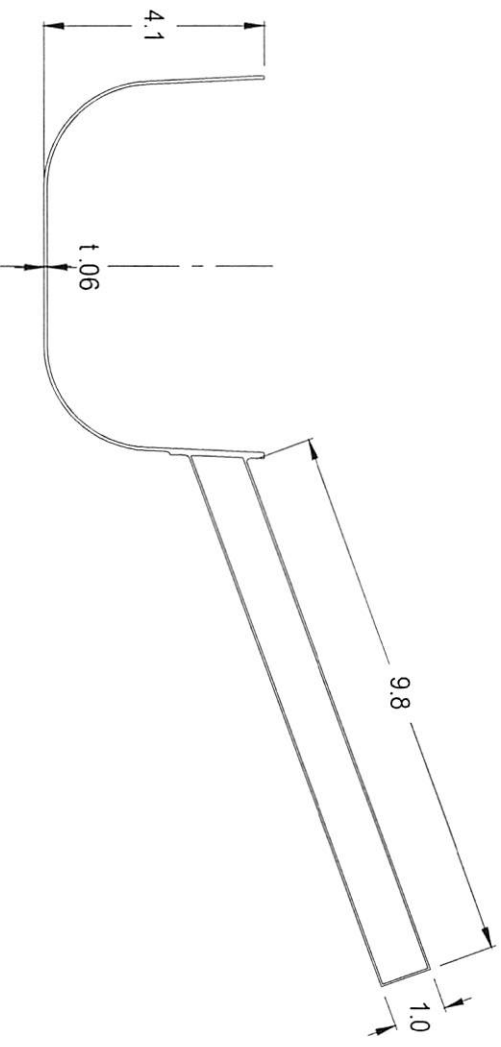
TOP VIEW



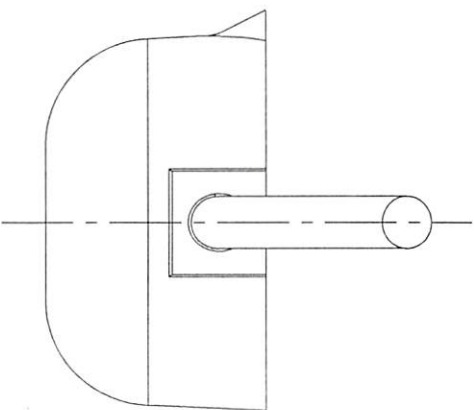
**CONFIDENTIAL**  
Property of  
Eagle Stainless Container



AA SECTION VIEW



RIGHT-SIDE VIEW



PROPERTY OF ESC. DO NOT DUPLICATE OR DISTRIBUTE.

**EAGLE** 816 NINA WAY  
WARMINSTER PA 18974  
TEL#: 215-957-9333  
STAINLESS FAX#: 215-957-9330  
www.eaglestainless.com

Customer and/or Vendor agrees to keep confidential the contents of any documents and materials including but not limited to Quotation(s), Invoice(s), Purchase Order(s), and Drawing(s) that Eagle Stainless may provide to or for the Customer and/or Vendor. Customer and/or Vendor agrees to indemnify Eagle Stainless for all damages, including all attorneys' fees and costs incurred in connection with any unjustified use or disclosure of such confidential information by any of Customer and/or Vendor's employees or agents.

DRAWINGS# : HSA-1-01A	DRAWN BY : BEN S. KWON	DATE : 01/24/2019	TOLERANCES UNLESS OTHERWISE SPECIFIED
MATERIAL : T-304 SS	(1) APPROVED BY : <i>[Signature]</i>	(2) APPROVED BY : <i>[Signature]</i>	THREE PLACE DECIMAL
CAPACITY : 2.0 L	(3) APPROVED BY : <i>[Signature]</i>		TWO PLACE DECIMAL
FINISH : 10 Ra (ELECTROPOLISHED OPTIONAL)			ONE PLACE DECIMAL
MODEL # : HS-2	APPROVED BY (CUSTOMER SIGNATURE):	DO NOT SCALE	FRACTIONS
			ANGULARITY
			RADIUS