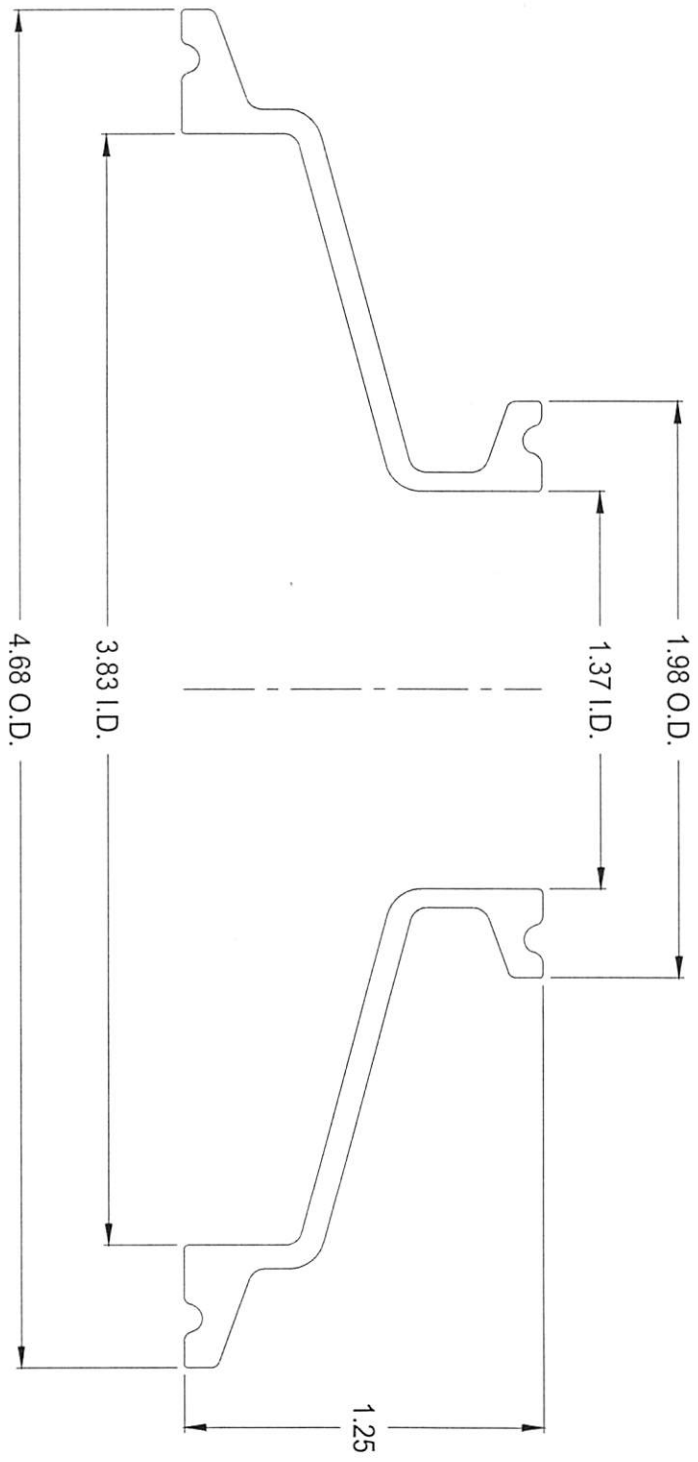


CONFIDENTIAL
Property of
Eagle Stainless Container

4" TC X 1-1/2" TC REDUCER



PROPERTY OF ESC. DO NOT DUPLICATE OR DISTRIBUTE.

EAGLE 816 NINA WAY
WARMINSTER PA 18974
TEL#: 215-957-9333
FAX#: 215-957-9330
www.eaglestainless.com

Customer and/or Vendor agrees to keep confidential the contents of any documents and materials including but not limited to Quotation(s) Invoice(s), Purchase Order(s), and Drawing(s) that Eagle Stainless provides to Customer and/or Vendor and acknowledges that they are trade secrets of Eagle Stainless. Customer and/or Vendor agrees to indemnify Eagle Stainless for all damages (including all attorneys' fees and costs incurred) in connection with any unauthorized use or disclosure of such confidential information by any of Customer and/or Vendor's employees or agents.

DRAWING# : RD4015A-1-01A	DRAWN BY : BEN S. KWON	DATE : 02/06/2018	TOLERANCES UNLESS OTHERWISE SPECIFIED
MATERIAL : T 316L SS	(1) APPROVED BY :	(2) APPROVED BY :	THREE PLACE DECIMAL
CAPACITY : N/A	(3) APPROVED BY : <i>BS</i>		TWO PLACE DECIMAL
FINISH : ELECTROPOLISHED	NOTE : ALL DIMENSIONS ARE INCHES.	DO NOT SCALE	ONE PLACE DECIMAL
MODEL # : 4" TC X 1-1/2" TC REDUCER	APPROVED BY (CUSTOMER SIGNATURE):		FRACTIONS
			ANGULARITY
			RADIUS
			+/- .010"
			+/- .050"
			+/- .100"
			+/- .132"
			+/- .1/2 deg
			+/- .1/32" - .031"