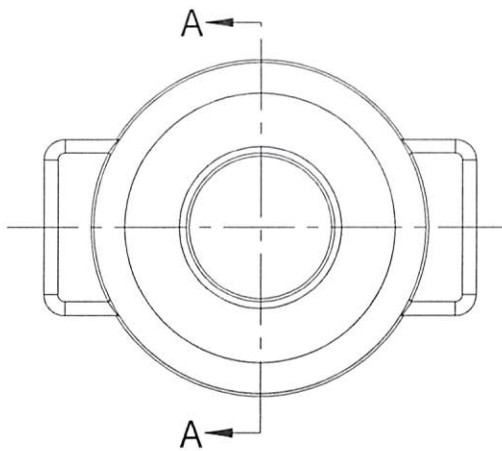


TOP VIEW



\* ASME PRESSURE VESSEL

MATERIAL : TYPE 316L STAINLESS STEEL

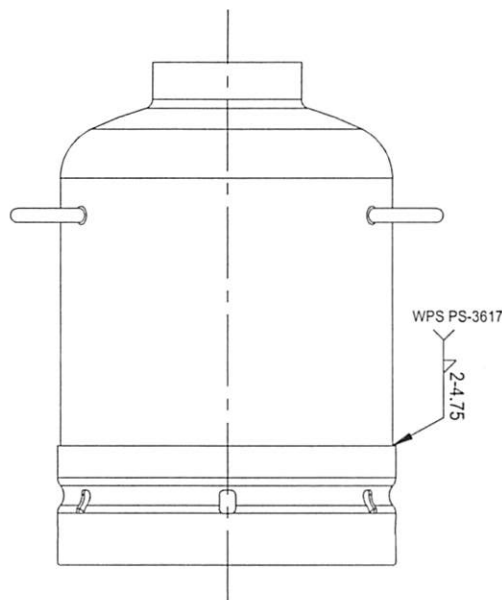
PLATE PER A.S.M.E. SPEC. SA-240

TYPE 304 STAINLESS STEEL (NON PRODUCT CONTACT PARTS)

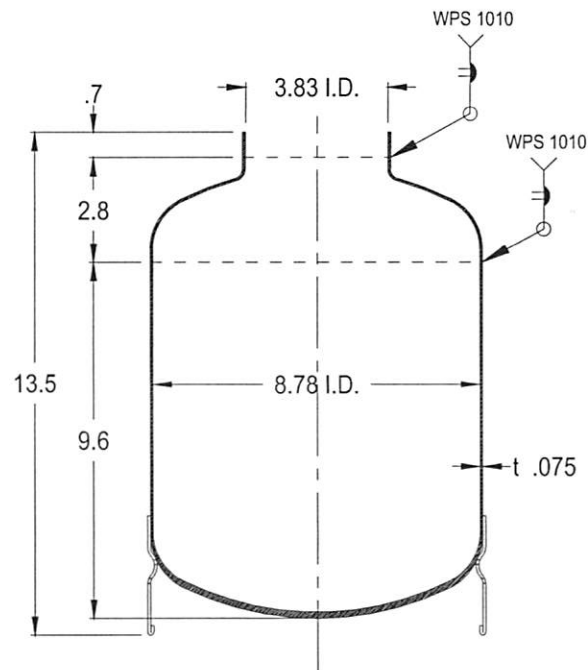
**CONFIDENTIAL**  
Property of  
Eagle Stainless Container

NOTES :

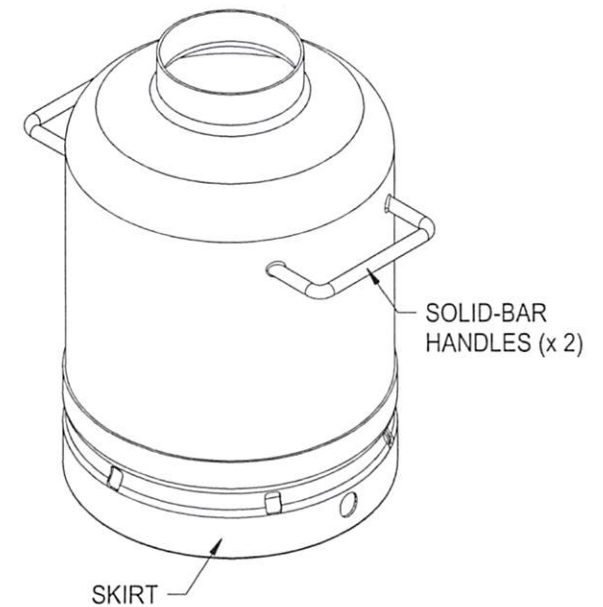
1. CONSTRUCTION MEETS LATEST A.S.M.E. "SEC. VIII DIV. 1" 2021 EDITION
2. ALL WELDS TO BE GTAW - WPS 1010 REV. 0
3. MAXIMUM WORKING PRESSURE : 185 psi @ 150° F
4. HYDROSTATIC TEST : 300 psi @ ROOM TEMP.
5. INSIDE SURFACE FINISH : 12 Ra or BETTER Micro-inch (Electropolished Optional)  
WELDS ARE GROUND SMOOTH & FLUSH  
TOP GIRTH SEAM WILL BE POLISHED.
6. HELIUM LEAK TEST HELIUM LEAK RATE :  $1 \times 10^6$  mbar L/SEC. or BETTER (optional)



FRONT VIEW



A-A SECTION VIEW



PROPERTY OF ESC. DO NOT DUPLICATE OR DISTRIBUTE.

**EAGLE**  
STAINLESS  
www.eaglestainless.com

816 NINA WAY  
WARMINSTER PA 18974  
TEL# : 215-957-9333  
FAX# : 215-957-9330

Customer and/or Vendor agrees to keep confidential the contents of any documents and materials including but not limited to Quotation(s), Invoice(s), Purchase Order(s), and Drawing(s) that Eagle Stainless provides to Customer and/or Vendor and acknowledges that they are trade secrets of Eagle Stainless. Customer and/or Vendor agrees to indemnify Eagle Stainless for all damages (including all attorneys' fees and costs incurred) in connection with any unauthorized use or disclosure of such confidential information by any of Customer and/or Vendor's employees or agents.

DRAWING# : EPV10B-E21-1-01A

MATERIAL : See Note on Drawing for Detail.

CAPACITY : 10.0 L

FINISH : See Note on Drawing for Detail.

JOB # : EPV10B-E21

DRAWN BY : BEN S. KWON

DATE : 02/01/2022

(1) APPROVED BY :

(2) APPROVED BY :

NOTE : ALL DIMENSIONS ARE INCHES.

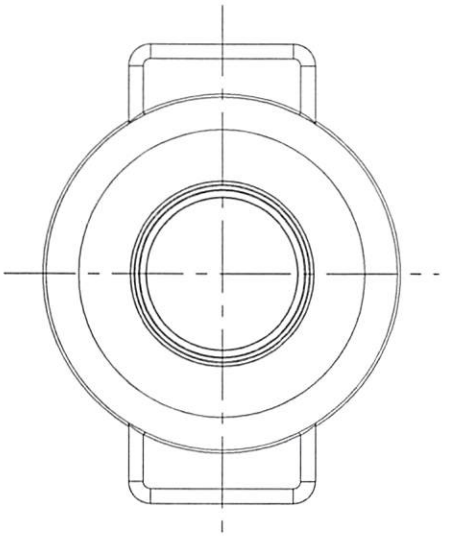
DO NOT SCALE.

APPROVED BY (CUSTOMER SIGNATURE) :

TOLERANCES UNLESS OTHERWISE SPECIFIED

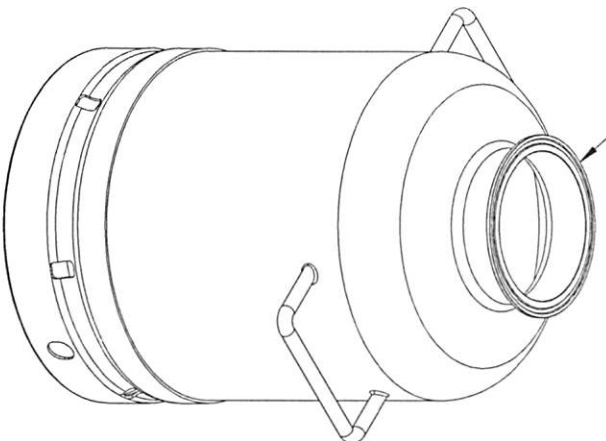
THREE PLACE DECIMAL	+/- .010"
TWO PLACE DECIMAL	+/- .125"
ONE PLACE DECIMAL	+/- .250"
FRACTIONS	+/- 1/32"
ANGULARITY	+/- 1/2 deg.

TOP VIEW

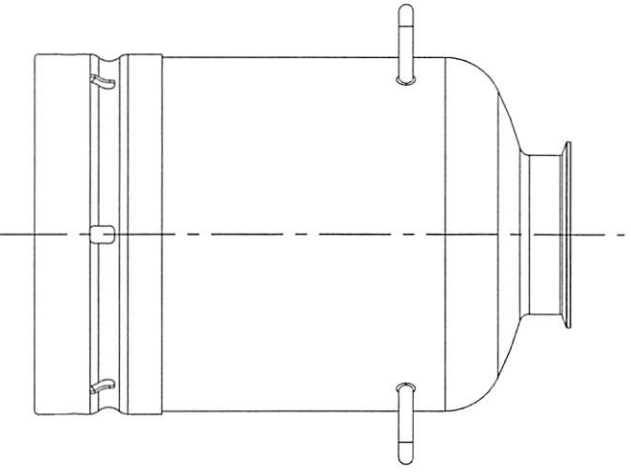


**CONFIDENTIAL**  
Property of  
Eagle Stainless Container

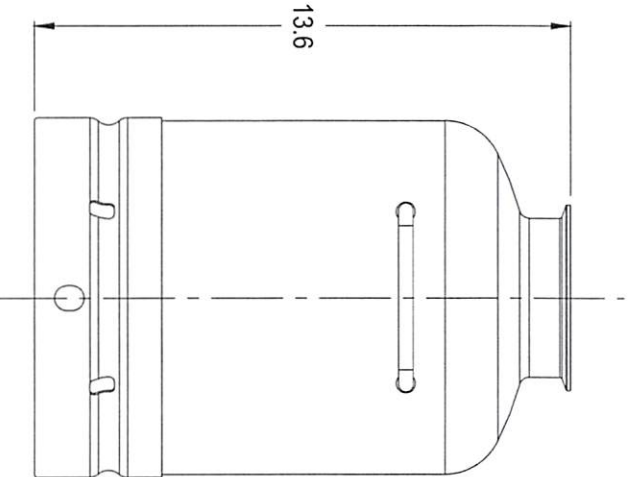
4" TRI-CLAMP



FRONT VIEW



SIDE VIEW



13.6

PROPERTY OF ESC. DO NOT DUPLICATE OR DISTRIBUTE.

**EAGLE**  
STAINLESS  
www.eaglestainless.com

816 NINA WAY  
WARMINSTER PA 18974  
TEL#: 215-957-9333  
FAX#: 215-957-9330

Customer and/or Vendor agrees to keep confidential the contents of any documents and materials including but not limited to Quotation(s) Invoice(s), Purchase Order(s), and Drawing(s) that Eagle Stainless provides to Customer and/or Vendor and acknowledges that they are the property of Eagle Stainless. All Customer and/or Vendor agrees to keep and hold Eagle Stainless confidential information in confidence and to refrain from disclosing such confidential information to any third party without the prior written consent of Eagle Stainless. Eagle Stainless reserves the right to use the information for its internal business purposes and for its marketing and sales purposes. Eagle Stainless does not warrant the accuracy of the information provided herein. Eagle Stainless is not responsible for any loss or damage to any property or information of any third party caused by the use of the information provided herein. Eagle Stainless is not responsible for any loss or damage to any property or information of any third party caused by the use of the information provided herein.

DRAWING# : EPV10B-E21-1-01B  
MATERIAL : See Note on Drawing# EPV10B-E21-1-01A for Detail  
CAPACITY : 10.0 L  
FINISH : See Drawing# EPV10B-E21-1-01A for Detail  
JOB # : EPV10B-E21

DRAWN BY : BEN S. KWON  
(1) APPROVED BY :   
DATE : 02/01/2022  
(2) APPROVED BY :   
NOTE : ALL DIMENSIONS ARE IN INCHES.  
DO NOT SCALE.  
APPROVED BY (CUSTOMER SIGNATURE) :

TOLERANCES UNLESS OTHERWISE SPECIFIED	
THREE PLACE DECIMAL	+/- .010"
TWO PLACE DECIMAL	+/- .125"
ONE PLACE DECIMAL	+/- .250"
FRACTIONS	+/- .125"
ANGULARITY	+/- 1/2 deg.