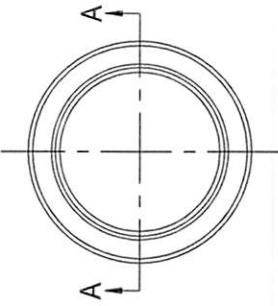


TOP VIEW



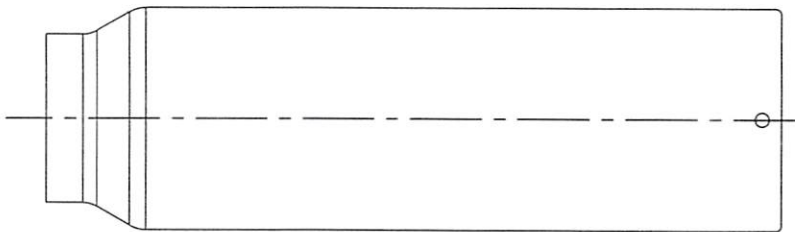
\* ASME PRESSURE VESSEL

MATERIAL : TYPE 316L STAINLESS STEEL  
 PLATE PER A.S.M.E. SPEC. SA-240  
 TUBE PER A.S.M.E. SPEC. SA-249

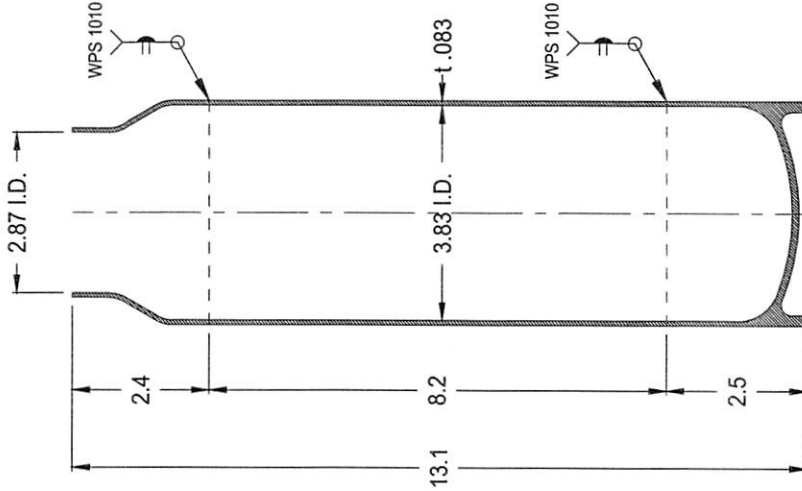
NOTES :

1. CONSTRUCTION MEETS LATEST A.S.M.E. "SEC. VIII DIV. 1" 2025 EDITION
2. ALL WELDS TO BE GTAW - WPS 1010 REV. 0
3. MAXIMUM WORKING PRESSURE : 195 psi @ 125° F
4. HYDROSTATIC TEST : 300 psi @ ROOM TEMP.
5. INSIDE SURFACE FINISH : 12 Ra or BETTER Micro-inch INCL. (Electropolished optional)  
 WELDS ARE GROUND SMOOTH & FLUSH  
 TOP GIRTH SEAM WILL BE POLISHED.
6. HELIUM LEAK TEST HELIUM LEAK RATE :  $1 \times 10^{-6}$  mbar L/SEC. or BETTER (optional)  
 WELDS ARE GROUND SMOOTH & FLUSH  
 TOP GIRTH SEAM WILL BE POLISHED.

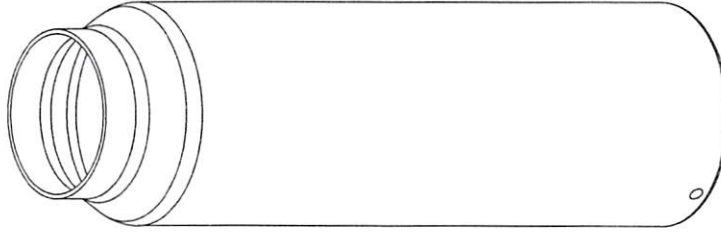
**CONFIDENTIAL**  
 Property of  
 Eagle Stainless



FRONT VIEW



A-A SECTION VIEW



**EAGLE**  
 STAINLESS  
 www.eaglestainless.com

816 NINA WAY  
 WARMINSTER PA 18974  
 TEL# : 215-957-9333  
 FAX# : 215-957-9330

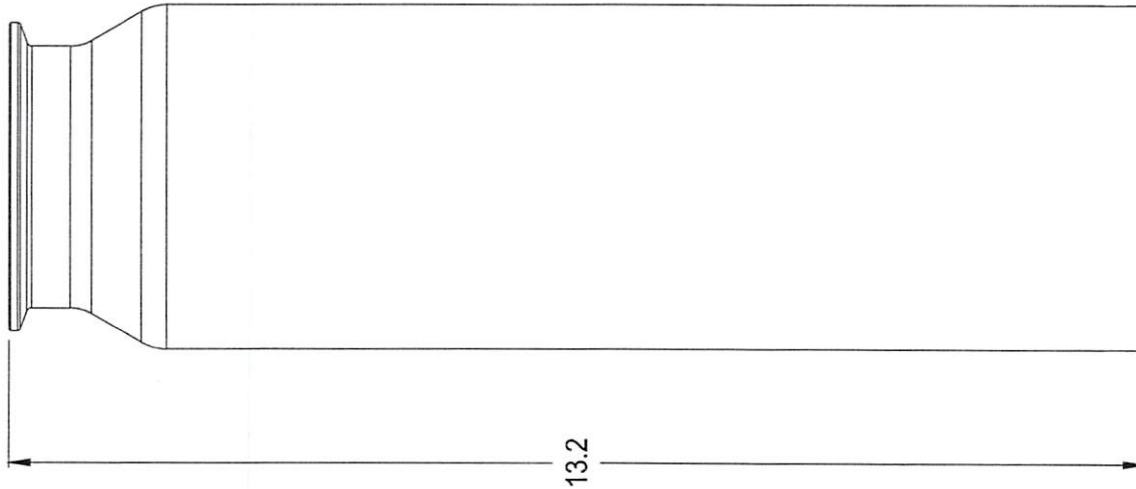
DRAWING# : EPVZE-E25-101A  
 MATERIAL : See Note on Drawing for Detail  
 CAPACITY : 2.0 L  
 FINISH : See Note on Drawing for Detail  
 JOB# : EPVZE-E25

DRAWN BY : BEN S. KWON  
 DATE : 04/11/2026  
 (1) APPROVED BY : *Blk* (2) APPROVED BY : *Blk*  
 NOTE : ALL DIMENSIONS ARE INCHES.  
 DO NOT SCALE.  
 APPROVED BY (CUSTOMER SIGNATURE):

PROPERTY OF ESC. DO NOT DUPLICATE OR DISTRIBUTE.

TOLERANCES UNLESS OTHERWISE SPECIFIED	
THREE PLACE DECIMAL	+/- .010"
TWO PLACE DECIMAL	+/- .125"
ONE PLACE DECIMAL	+/- .250"
FRACTIONS	+/- 1/32"
ANGULARITY	+/- 1/2 deg

**CONFIDENTIAL**  
Property of  
Eagle Stainless



3" TRI-CLAMP

DRAIN HOLES (x 2)

13.2

<b>EAGLE</b> STAINLESS www.eaglestainless.com	816 NINA WAY WARMINSTER PA 18974 TEL#: 215-957-9333	Customer and/or Vendor agrees to keep confidential the contents of any documents and materials including but not limited to Quotation(s), Invoice(s), Purchase Order(s), and Drawing(s) that Eagle Stainless provides to Customer and/or Vendor and acknowledges that they are trade secrets of Eagle Stainless. Customer and/or Vendor agrees to indemnify Eagle Stainless for damages (including all attorneys' fees and costs) incurred in any action in which any use or disclosure of such confidential information by any of Customer and/or Vendor's employees or agents.	DRAWING# : EPVZE-E25-1-01B MATERIAL : T-316L-SS CAPACITY : 2.0 L FINISH : See Drawing# EPVZE-E25-1-01A for Detail. JOB # : EPVZE-E25	DRAWN BY : BEN S. KWON (1) APPROVED BY: <i>Bsk</i> NOTE : ALL DIMENSIONS ARE INCHES. DO NOT SCALE. APPROVED BY (CUSTOMER SIGNATURE):	DATE : 04/11/2026 (2) APPROVED BY: <i>[Signature]</i>	PROPERTY OF ESC. DO NOT DUPLICATE OR DISTRIBUTE.	
				TOLERANCES UNLESS OTHERWISE SPECIFIED THREE PLACE DECIMAL TWO PLACE DECIMAL ONE PLACE DECIMAL FRACTIONS ANGULARITY	+/- .010" +/- .125" +/- .250" +/- .132" +/- .1/2 Deg.		