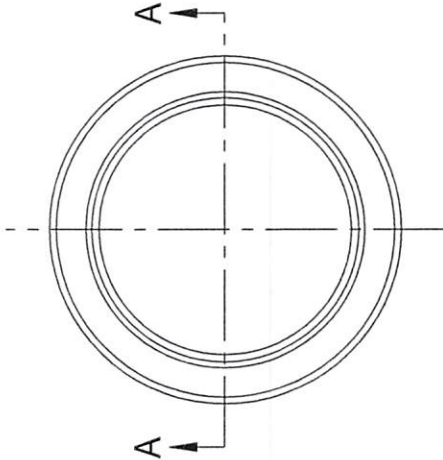
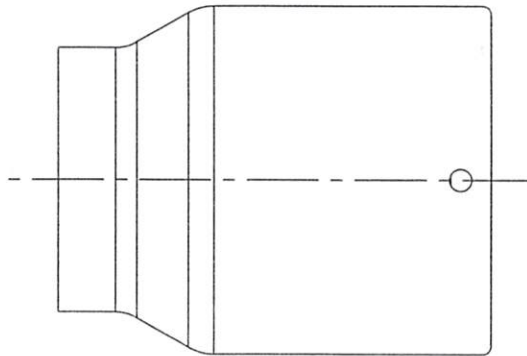


TOP VIEW



FRONT VIEW



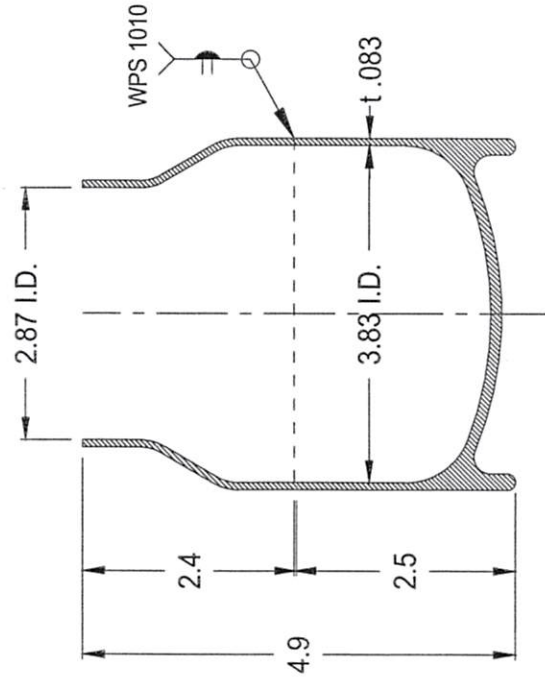
\* ASME PRESSURE VESSEL

MATERIAL : TYPE 316L STAINLESS STEEL  
 PLATE PER A.S.M.E. SPEC. SA-240

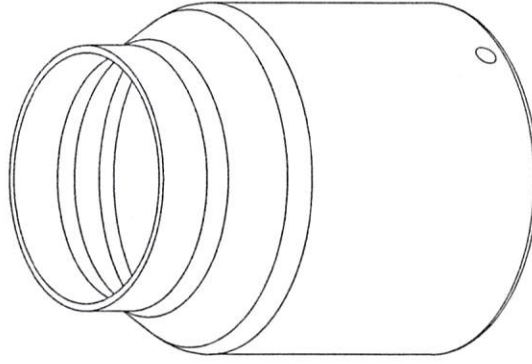
NOTES :

1. CONSTRUCTION MEETS LATEST A.S.M.E. "SEC. VIII DIV. 1" 2025 EDITION
2. ALL WELDS TO BE GTAW - WPS 1010 REV. 0
3. MAXIMUM WORKING PRESSURE : 195 psi @ 125° F
4. HYDROSTATIC TEST : 300 psi @ ROOM TEMP.
5. INSIDE SURFACE FINISH : 12 Ra or BETTER Micro-inch INCL. (Electropolished optional)  
 WELDS ARE GROUND SMOOTH & FLUSH  
 TOP GIRTH SEAM WILL BE POLISHED.
6. HELIUM LEAK TEST HELIUM LEAK RATE :  $1 \times 10^{-5}$  mbar L/SEC. or BETTER (optional)

**CONFIDENTIAL**  
 Property of  
 Eagle Stainless

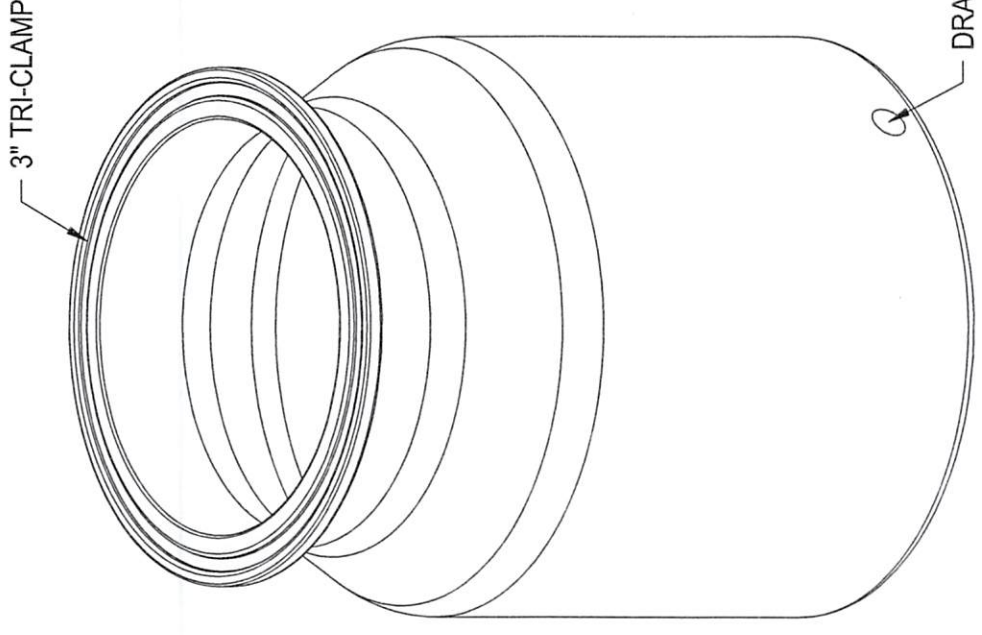
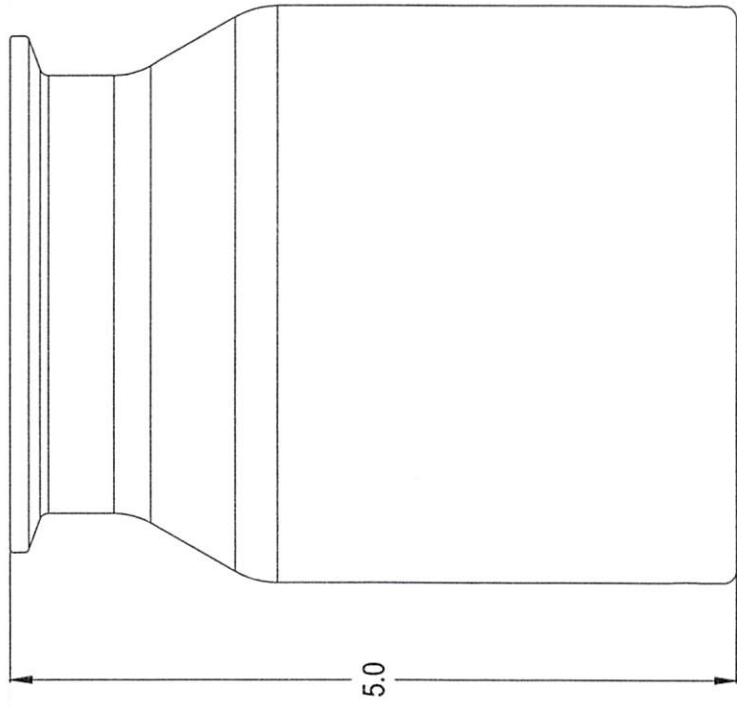


A-A SECTION VIEW



<b>EAGLE</b> 816 NINA WAY WARMINSTER PA 18974 TEL# : 215-957-9333 STAINLESS FAX# : 215-957-9330 www.eaglestainless.com	Customer and/or Vendor agrees to keep confidential the contents of any documents and materials including but not limited to Quotation(s), Invoice(s), Purchase Order(s), and Drawing(s) that Eagle Stainless provides to Customer and/or Vendor and acknowledges that they are the property of Eagle Stainless. Customer and/or Vendor agrees to indemnify Eagle Stainless for attorney's fees and costs incurred in the event of any actual or potential disclosure of such confidential information by any of Customer and/or Vendor's employees or agents.	DRAWING# : EPV500F-E25-1-01A MATERIAL : See Note on Drawing for Detail. CAPACITY : 500.0 ml. FINISH : See Note on Drawing for Detail. JOB # : EPV500F-E25	DATE : 05/26/2026 (2) APPROVED BY: <i>[Signature]</i> NOTE : ALL DIMENSIONS ARE INCHES. DO NOT SCALE. APPROVED BY (CUSTOMER SIGNATURE):	TOLERANCES UNLESS OTHERWISE SPECIFIED THREE PLACE DECIMAL +/-.010" TWO PLACE DECIMAL +/-.125" ONE PLACE DECIMAL +/-.250" FRACTIONS +/-.1/32" ANGULARITY +/-.1/2 Deg.
	816 NINA WAY WARMINSTER PA 18974 TEL# : 215-957-9333 STAINLESS FAX# : 215-957-9330 www.eaglestainless.com	DRAWN BY : BEN S. KWON (1) APPROVED BY: <i>[Signature]</i> NOTE : ALL DIMENSIONS ARE INCHES. DO NOT SCALE. APPROVED BY (CUSTOMER SIGNATURE):	PROPERTY OF ESC. DO NOT DUPLICATE OR DISTRIBUTE.	

**CONFIDENTIAL**  
Property of  
Eagle Stainless



**EAGLE**  
S T A I N L E S S  
www.eaglestainless.com

816 NINA WAY  
WARMINSTER PA 18974  
TEL#: 215-957-9333  
FAX#: 215-957-9330

Customer and/or Vendor agrees to keep confidential the contents of any documents and materials including but not limited to Quotation(s), Invoice(s), Purchase Order(s), and Drawing(s) that Eagle Stainless provides to Customer and/or Vendor and acknowledges that they are trade secrets of Eagle Stainless. Customer and/or Vendor agrees to indemnify Eagle Stainless for all damages (including all attorneys' fees and costs incurred) in connection with any unauthorized use or disclosure of such confidential information by any of Customer and/or Vendor's employees or agents.

DRAWING# : EPV500F-E25-1-01B  
MATERIAL : T-316L-SS  
CAPACITY : 500.0 ml  
FINISH : See Drawing# EPV500F-E25-1-01A for Detail.  
JOB # : EPV500F-E25

DRAWN BY : BEN S. KWON  
(1) APPROVED BY: *[Signature]*  
NOTE : ALL DIMENSIONS ARE INCHES.  
DO NOT SCALE.  
APPROVED BY (CUSTOMER SIGNATURE):

DATE : 05/26/2026  
(2) APPROVED BY: *[Signature]*

TOLERANCES UNLESS OTHERWISE SPECIFIED	
THREE PLACE DECIMAL	+/- .010"
TWO PLACE DECIMAL	+/- .125"
ONE PLACE DECIMAL	+/- .250"
FRACTIONS	+/- .132"
ANGULARITY	+/- .1/2 Deg.

PROPERTY OF ESC. DO NOT DUPLICATE OR DISTRIBUTE.